

Berwick Housing Authority

NEWSLETTER

DECEMBER 2016



Berwick Housing Authority

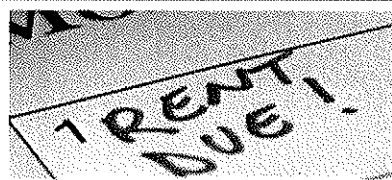
2751 Fifth Street
P.O. Box 231
Berwick, LA 70342

(985) 385-1546 Office
(985) 385-5840 Fax

berwickhousing@petronet.net

Visit our website:
Berwickhousingauthority.com

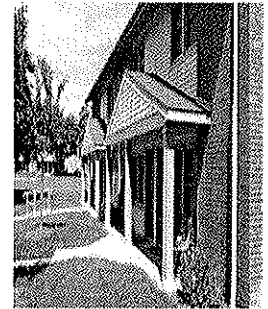
Clarence Robinson, Jr., Executive Director



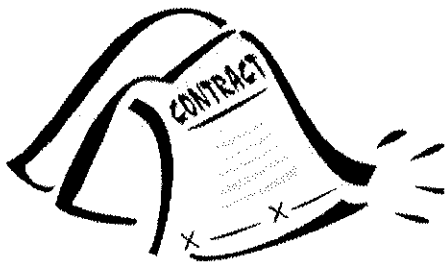
Rent is due **December 12th** which is the eight working day of the month. If you do not pay by the 12th a \$10 late fee will be applied. If you signed a contract, your rent is due December 15th, 2016, but a late fee is still applied after the 12th. **The absolute last day to pay rent is December 20th.**



The office will be closed on **December 23rd & 26th** for Christmas. If you have a maintenance emergency please call the office and listen to the message for the phone number to the maintenance guy on call.



PLEASE KEEP YOUR FRONT/BACK PORCH AND YARD CLEAN AT ALL TIMES.



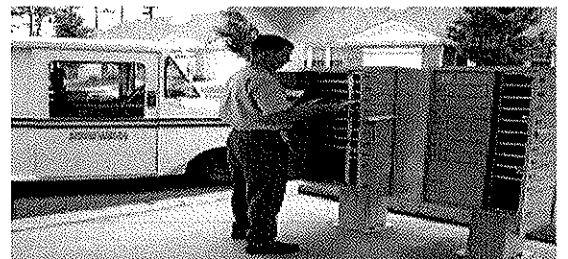
If you are currently employed and would like to sign a contract for 2017 you may come into the office **December 5th-9th** to sign one. This will be the only time that you will have the opportunity to sign a contract for the year 2017. Signing a contract gives you until the 15th of each month to pay your rent without getting a strike, but you will still have a \$10 late fee applied after the 8th working day of the month.

****If you lose your job, the contract will be automatically voided.**



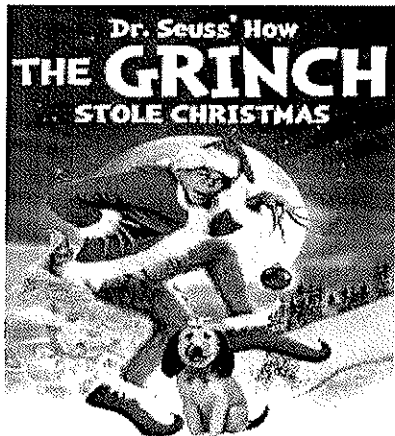
www.berwickhousing.com 382-9279/86

IF A LETTER IS SENT TO YOU FROM THE OFFICE REQUESTING INFORMATION, YOUR IMMEDIATE RESPONSE IS REQUIRED. NOT RESPONDING COULD RESULT IN TERMINATION OF YOUR LEASE.

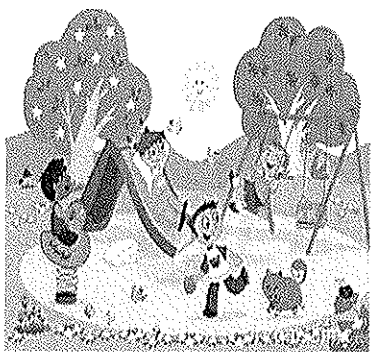


ATTENTION RESIDENTS

- Mail will start being delivered to the cluster mailboxes on **Saturday, December 3, 2016.**
- A representative from the Post Office will be at the Berwick Housing Authority to issue keys from **1:00 pm-3:00 pm** on **November 30, December 1st and 2nd.**
- **The initial keys are free**, but if you lose your keys it will cost \$20 to change the lock.
- **You must bring pictured ID to prove proof of residence.**
- If you cannot pick-up your keys on any of those days, you will have to go to the **Morgan City Post Office** to pick-up your keys.



“How the Grinch Stole Christmas” will be shown at Lawrence Park in Morgan City on December 9, 2016 @ 6:00 PM
FREE TO THE PUBLIC



ATTENTION PARENTS:
 Please keep an eye on your children when they are playing on the housing authority playgrounds. Playgrounds are located on Guzzetta & Blum Street.

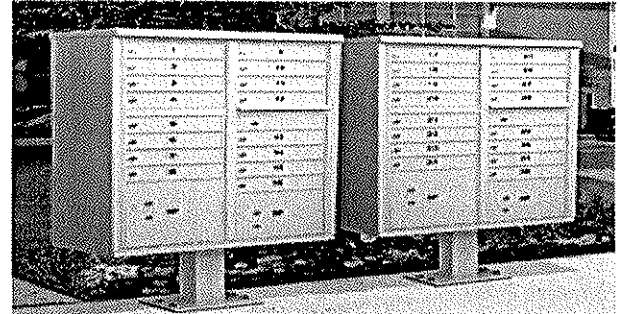


Public schools will be closed starting December 22, 2016 until January 4, 2017. Classes will resume on January 5, 2017.

Merry Christmas
FROM THE BERWICK HOUSING AUTHORITY



2017 LHC-NAHRO Scholarship Applications are available at the Housing Authority Office
 -Applications are for residents who are **High School Seniors** graduating this year and for **Head of Household** residents either already in school or committed to starting.
 -If interested, please come to the office and pick-up an application which lists eligibility requirements
PLEASE NOTE THE DEADLINE FOR APPLICATIONS IS FEBRUARY 10, 2017



The Cluster Mailboxes that have been installed throughout the development are protected by federal law, and crimes against them and the mail they contain are considered federal offense. Violators can be fined up to \$250,000 or imprisoned up to three years for each act of vandalism. Parents please speak with your children/teenagers about the penalties of mailbox vandalism. If you are witness to vandalism of the mailboxes, get a description of the person(s), then immediately report this information to the police.

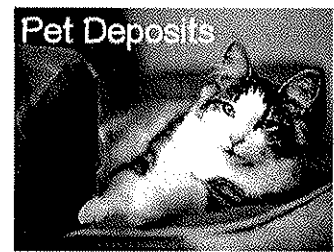
RESIDENT COUNCIL Elections



IN JANUARY 2017 WE WILL HAVE AN ELECTION FOR THE VACANT POSITION OF TREASURER. IF YOU ARE INTERESTED IN RUNNING FOR THE POSITION, PLEASE CONTACT CLARISSA @THE BERWICK HOUSING AUTHORITY DURING THE MONTH OF DECEMBER. A LIST OF DUTIES THAT THE TREASURER IS RESPONSIBLE FOR WILL BE PLACED IN THE LOBBY OF THE BHA OFFICE. A COPY CAN ALSO BE SENT TO YOU UPON REQUEST.



Please have some common courtesy for your neighbors and clean up after your dogs. It is also an Ordinance of the Town of Berwick that any excretion left by your dog on public or private property is declared to be a public nuisance.



In order to have a cat or a dog while residing at the Berwick Housing Authority you must pay a **\$100 pet deposit**. The animal must be:
 -Under 25 lbs.
 -Up to date on shots
****A pet contract must also be signed at the office.**



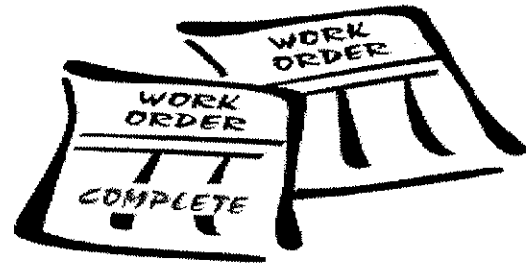
Social Security recipients will get a cost-of-living increase of **0.3%** in 2017.

Estimated 2017 Medicare Premiums

Based on .3% 2017 Social Security COLA

Average Retiree Social Security Monthly Benefit	Current Medicare Premium	Estimated 2017 Premium
\$1,000	\$104.90	\$107.90
\$1,340	\$104.90	\$108.92
\$1,700	\$104.90	\$110.00
\$2,000	\$104.90	\$110.90

* These are estimates for the majority (70%) of Medicare beneficiaries protected by "Hold Harmless."
Final 2017 Medicare premiums will be released in November, 2016.



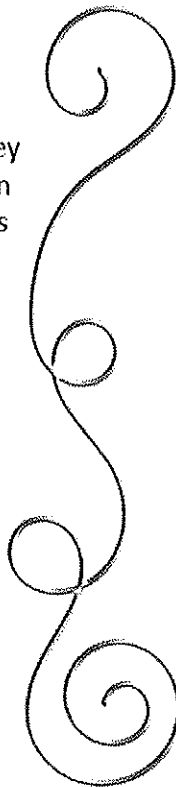
When you call in a work order you are giving us permission to enter your unit to fix a problem. Work orders need to be completed in a timely manner especially if the problem is causing damage to the unit. If you are not home when the maintenance arrives to complete the work order they will enter your unit. A door tag will be left on your door to inform you that maintenance entered your unit and completed the work order.



FORTIN STREET RESIDENTS:
Please **DO NOT** park in the center parking spot in front of the maintenance shop **AT ANY TIME**. This spot is reserved for BHA maintenance vehicles. Maintenance hauls heavy equipment in & out of the shop during the day, after hours and on weekends if called out.

Holiday Tunes

- Away in a Manger
- Choir of the Bells
- Dominick the Donkey
- Frosty the Snowman
- Holly Jolly Christmas
- Jingle Bell Rock
- Jingle Bells
- Let it Snow
- Little Drummer Boy
- Little St Nick
- O Holy Night
- Rudolph
- Santa Baby
- Silent Nigh
- Silver Bells
- The Christmas Song
- The First Noel
- Winter Wonderland



S G R D A M A F C I F Z Z X F K U H J X
W A W A Y O B R E M M U R D E L T T I L
C K M B H P L O D U R J T G J I H Z N O
Z D W T Z E D S Y E L C B Y R T G C G K
G N O S S A M T S I R H C E H T I J L L
Q A N K O I D Y A L F D G I R L N B E D
X L S O X Q R T B T I N W X N E T O B J
D R T J T I R H V A A H X I P S N A E W
F E I F W V T E C M B E U U B T E S L S
N D T U C C H S A Y A A I N S N L C L Q
B N E V X E G N X I L M T R I I I Y R W
F O L N I A I O Z T K L I N X C S J O U
B W V E S Y N W K M G F O O A K T E C N
G R O K A C Y M V Z E U A J Y S L D K U
M E Q W Q O L A O H K P I T Y K B N M Q
G T A P U I O N T S L L E B E L G N I J
L N F G C Z H N S L L E B R E V L I S E
I I Y E K N O D E H T K C I N I M O D S
L W B T K S L L E B E H T F O R I O H C
U I M U Y F C J H B X B V R U M Q C Y B